

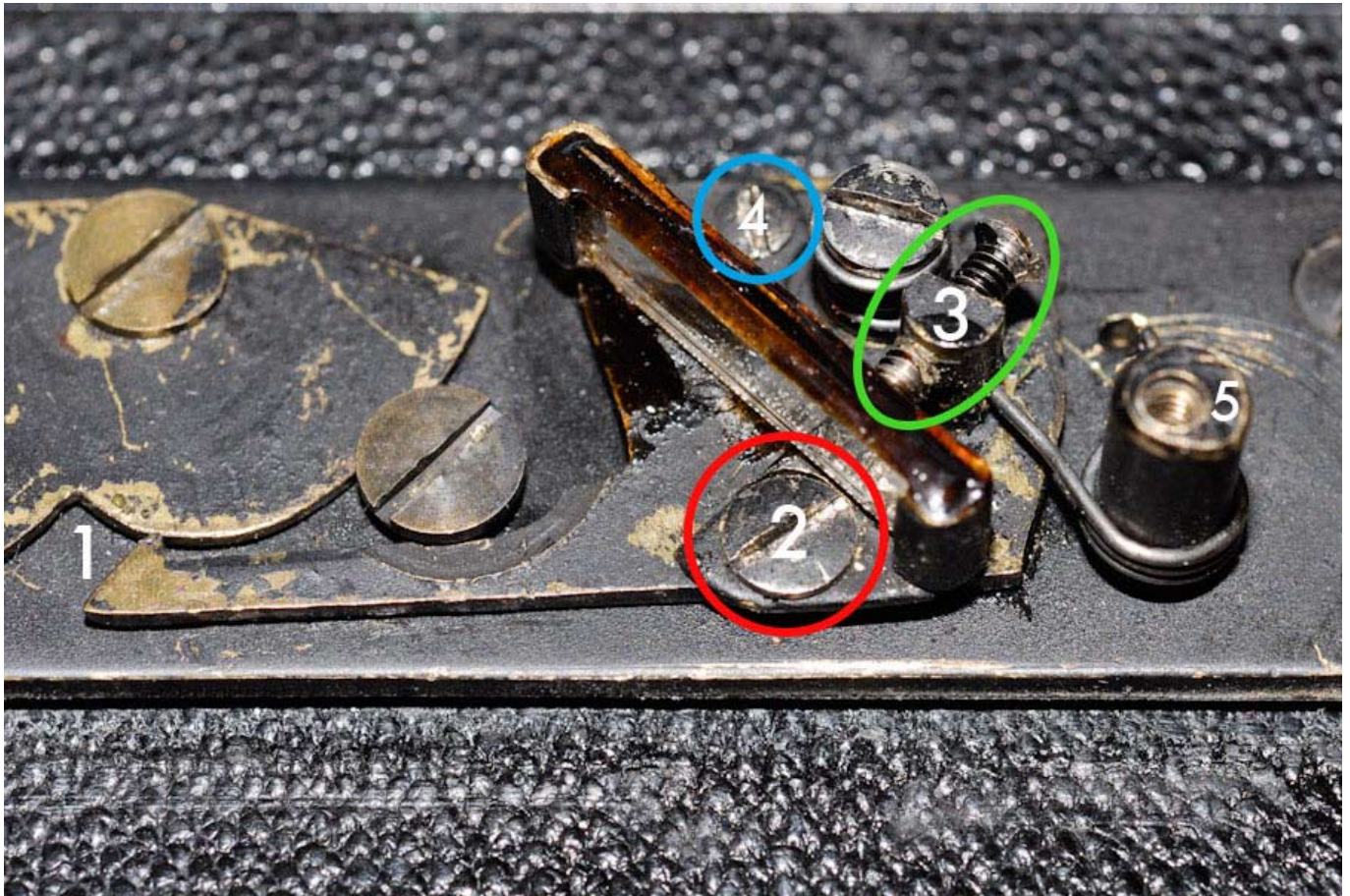
# Certo Dolly Supersport Rangefinder Adjustment

- loosen four screws in every corner of the rf-housing and lift it off
- loosen the one screw in the top of the inner (black) rf-housing (it connects to shaft (5) in the picture on p.2)
- slide off the inner housing to the left or right, carefully checking that the mirrors are not scratched or bent
- now it should look like this:



- you can check the rf by looking into the mirror on the right, shading the camera top from the left with your hand if there are bad reflections in the mirror
- usually only the right mirror needs adjustment, but if it is completely knocked off, you might have to initially readjust the left mirror as well

Here is a close-up of the right mirror unit:



- the 'finger' at (1) slides along the crescent metal plate on the left and changes the angle of the mirror on the right – the movement is tiny and therefore needs careful adjustment
- loosen screw number (2) just enough to let you slide the mirror unit carefully left or right. If it is stuck you might have to loosen the screw at the front (4) as well.
- look into the mirror from the back in the same way as when the housing is installed and focus at something at infinity (several hundred metres away)
- horizontal adjustment:  
if the superimposed image (the one that moves during focusing) is too far to the left at infinity move the mirror unit at (2) a tiny bit to the right, if the image is too far to the right at infinity, move the unit at (2) to the left. The appropriate shift might be only a fraction of a mm
- vertical adjustment:  
tightening of screw (3) moves the superimposed image up, loosening down
- when you adjust the whole unit for horizontal alignment, tighten screw (2) again before checking the rf as it slightly tilts the mirror and therefore has an effect on vertical alignment as well
- if screw (3) is tightened and puts pressure on the mirror and you loosen screw (2), it immediately knocks the rf out of adjustment, so loosen (3) first and count the turns for readjustment afterwards
- you probably need to go back and forth many times until everything fits
- once infinity is correct repeat for close range (1.5m). I had to set my camera slightly to the right at infinity to allow for precise adjustment at 1.5m where exact focusing is more critical (e.g. portraits with open aperture)
- check proper focus of the lens in the negative window with a loupe and some frosted glass/piece of film/frosted tape on clear glass etc.